

Work Smarter.




RegusTM Work
your way

Porsche Business Center

Lubomir Vasilev
Community Manager

lubomir.vasilev@regus.com

+359 2 907 7000

Flexible working is the future



103%

Increase in location independent work since 2006

SOURCE: Global Workplace Analytics, 2017, Location Independent. The Modern Way of Working



53%

of professionals now work remotely for at least half their working week

SOURCE: IWG business survey 2018



69%

of millennials will trade other work package benefits for better workspace

SOURCE: The Flexible Revolution. Insights into European flexible office markets, CBRE, 2017

It can't come soon enough



£14,000

The estimated annual cost of a desk in a corporate office



55%

of corporate office space is currently lying empty



Workspace flexibility

can make a huge difference to your bottom line

SOURCE: CBRE Lease calculator calc.cbre.com Example based on average standard lease cost for 50 desks over 5 year term in New York, London, Tokio, Sydney, Hong Kong and Paris.

Work your way

Join our global community of 2.5 million customers to make connections and create new opportunities. You'll find a network of businesses just like yours, right on your doorstep.

Work closer

With over a million offices, coworking spaces and meeting rooms to choose from we enable you to work wherever your business takes you.

Work faster

We include security, high-speed internet, facilities management and a receptionist so you can focus on your core business.

Work better

Whether you choose your own office or a desk in a coworking space, we make sure you have everything you need to be productive.

Work happier

Whether you enjoy the buzz of a sociable workspace or thrive in a quiet, calm environment, you can choose whatever works best for you.

Work agile

We make it easy to add or reduce space so you can respond quickly to any changes in your business.

Work together

Join our global community of 2.5 million customers to make connections and create new opportunities.



A new way of working

Whether you live locally, have clients nearby or colleagues you need to connect with, you can use our workspace whenever you need. Our network starts right here, with more locations close by, hundreds more across the UK, and thousands around the world. So wherever business takes you, we'll be there too.



3,300
Locations



1,100
Cities and towns



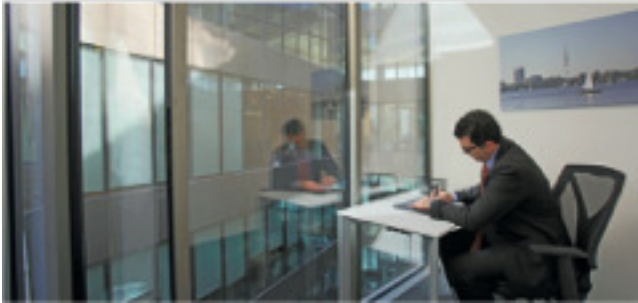
120
Countries



1
New centre everyday



What we do



Office Space

From a few desks to an entire building, we provide the office environment businesses need to collaborate, innovate and grow.



Coworking

Beautifully designed coworking environments, across thousands of locations around the world, open to everyone.



Meeting Room

The space you need to wow clients, brainstorm with colleagues, hold memorable workshops or deliver a winning pitch.



Virtual Office

A faster way to build your business presence; an instant company address, phone number and a place to work when you need it.



Flexible Working Plans

Work without constraints with access to our global network, so you can work where, when and how you want.

Key features



Support team

Our friendly team is here to welcome you and your guests and look after your day-to-day needs.



Business grade WiFi

Our office space comes with business grade internet and access to printers.



Telephony

Our office space includes digital desk phones with a telephone line and local phone number.



Ergonomic furniture

High-quality furniture from leading brands provide a comfortable environment to do your best work.



Common areas

Our kitchen and lounge areas are fully stocked and ready to use whenever you need to unwind.



Facilities and utilities

All utilities and office services – from power to cleaning – are included in the price of your office.



Business lounge access

Work where and when you need with complimentary access to our global network of business lounges.



Whatever works
best for you

Regus Porsche Business Centre

Flexible workspaces to match your work style

- 900 square meters of office space on the 5th floor.
- Private entrance
- 1.5 kilometers from Sofia Airport
- 1.5 blocks away from Sophia's Holy Forest Subway station
- Innovative and inspirational environment that caters to the needs of any growing business
- Restaurant



Regus Porsche Business Centre

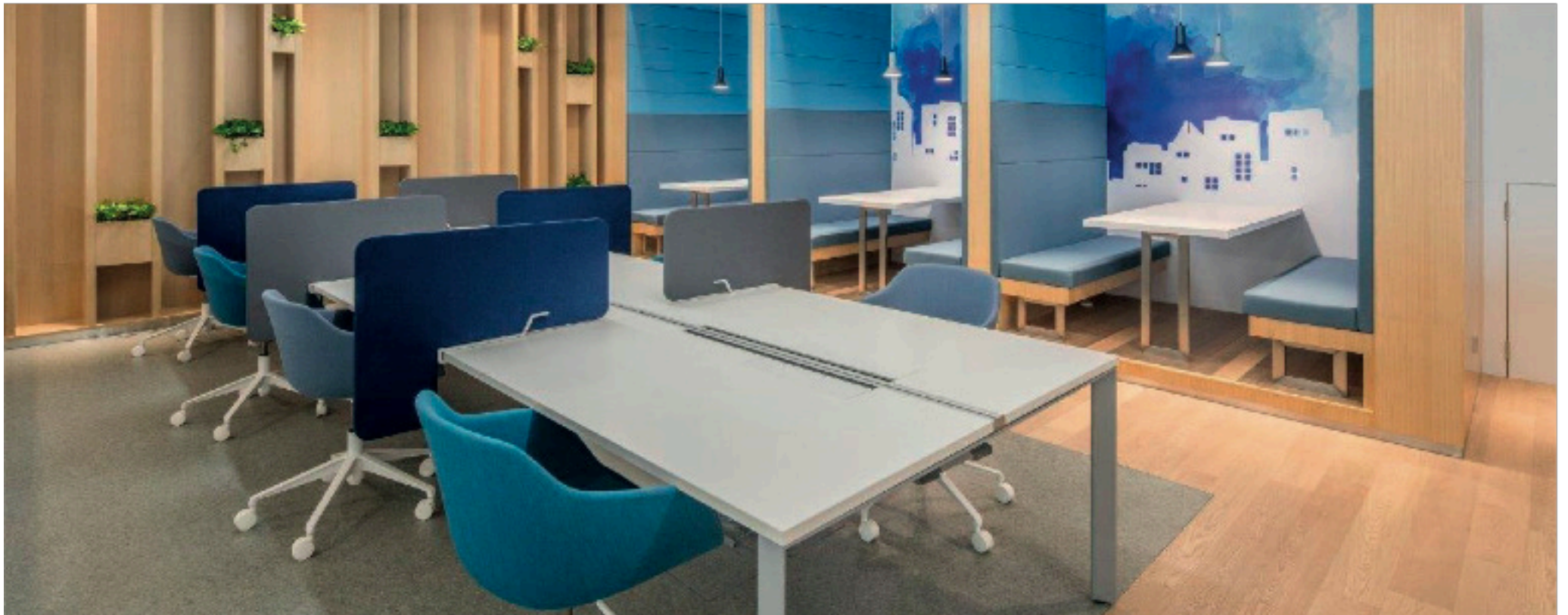


Reception



Offices

Regus Porsche Business Centre



Co-working desks and business lounge

Regus Porsche Business Centre



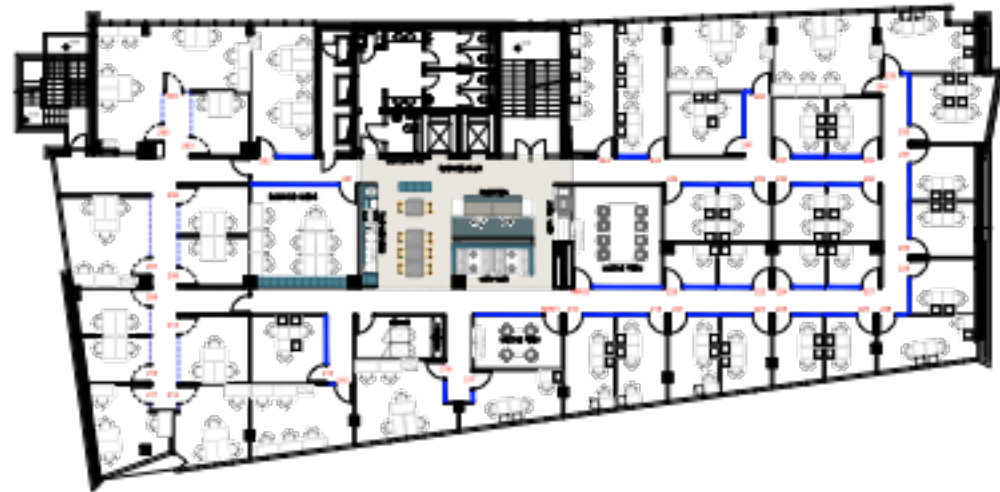
Meeting rooms

Floor plan

Construction phase 1.

Complete September 1, 2023

- Reception
- 71 sq. m Business Club
- Coworking
- 4 Meeting Rooms
- Outdoor Patio



Regus locations around the world

EUROPE

Austria
Azerbaijan
Belarus
Belgium
Bulgaria
Croatia
Cyprus
Czech Republic
Denmark
Estonia
Finland
France
Georgia
Germany
Gibraltar
Greece
Hungary
Iceland
Ireland
Italy
Latvia
Lithuania
Luxemboug
Malta
Moldova
Monaco
Norway
Poland
Portugal
Romania

Russia
Serbia
Slovakia
Slovenia
Spain
Sweden
Switerland
Turkey
Ukraine
United Kingdom

AFRICA

Algeria
Angola
Botswana
Dijbouti
Egypt
Ghana
Guinea
Ivory Coast
Kenya
Libya
Madagascar
Mauritius
Morocco
Mozambique
Namibia
Nigeria
Rwanda
Senegal
South Africa
Tanzania
Togo
Tunisia
Uganda
Zambia
Zimbabwe

AMERICAS

Argentina
Barbados
Brazil
Canada
Cayman Islands
Chile
Colombia
Costa Rica
Dominican Republic
Ecuador
El Salvador
Guatemala
Guyana
Honduras
Jamaica
Mexico
Panama
Paraguay
Peru
Puerto Rico
Trinidad & Tobago
United States
Uruguay

MIDDLE EAST

Bahrain
Iraq
Isreal
Jordan
Kuwait
Lebanon
Oman
Qatar
Saudi Arabia
United Arab Emirates

ASIA PACIFIC

Australia
Bangladesh
Brunei
Cambodia
China
Hong Kong
India
Indonesia
Japan
Kazakhstan
Macau
Malaysia
Nepal
New Zealand
Pakistan
Philippines
Singapore
South Korea
Sri Lanka
Taiwan
Takikistan
Thailand
Vietnam



Thank you